

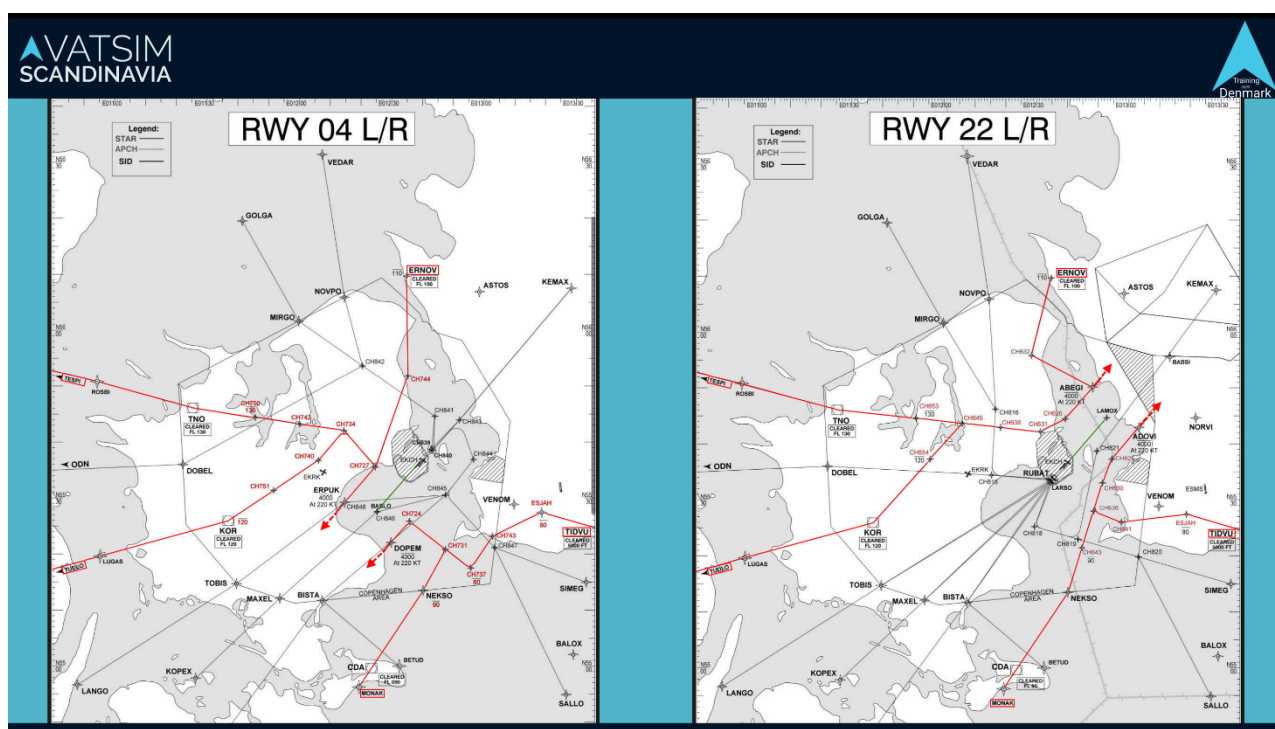
## EKCH – New STARs with AIRAC2211

November 2022

### What is new

If you are a regular into Copenhagen you may know that you are normally put on vectors. This is changed.

1. The new STARs into Copenhagen are now RNAV STARs which guides you from you last point into a downwind.
  2. From that downwind you **MUST** maintain the vector in your FMC (DO NOT connect waypoints to the ILS)
  3. The controller will turn you in, in sequence for the ILS
- Note the Altitude and speed restrictions and adhere to them
  - You may still be put on vectors if traffic demands it



### How do I know if I have the updated AIRAC

If you have the updated AIRAC your STARs will be called A, B, C or D depending on the runway in use. If you see STARs that ends in “E” “F” “M” or “N” you have the old AIRAC and need a contingency.

### What if I do NOT have the AIRAC2211 or later?

Advise ATC immediately! Even the ACC controller so we can start planning accordingly. Consider a navigraph subscription or google another way of getting the new AIRAC for your plane. The most important thing is that you notify us.