

NORWAYLIVE

LET'S LIGHT UP NORWAY

Practical Info 2023

Agenda

Friday	Saturday	Sunday
Venue Doors open 19.00 LT	—	Doors close 13.00 LT
VATSIM Event —	Starts 12.00 LT	Ends 12.00 LT
Sponsor Event Ad-hoc	Ad-hoc	—

Pilot Dorm Housing

If you have a Pilot Dorm housing, you'll receive information and a personal code for your room prior to the event. Please remember bed linen, towels and covers. Before you leave, we ask you to clean the room to the same state you got it in.

VATSIM Event

We'll be hosting our own 24h Norway Live event from Sat 12:00LT to Sun 12:00LT. Everyone is welcome to control before this event starts. See own staffing for details.

Pilot Flight Academy Events

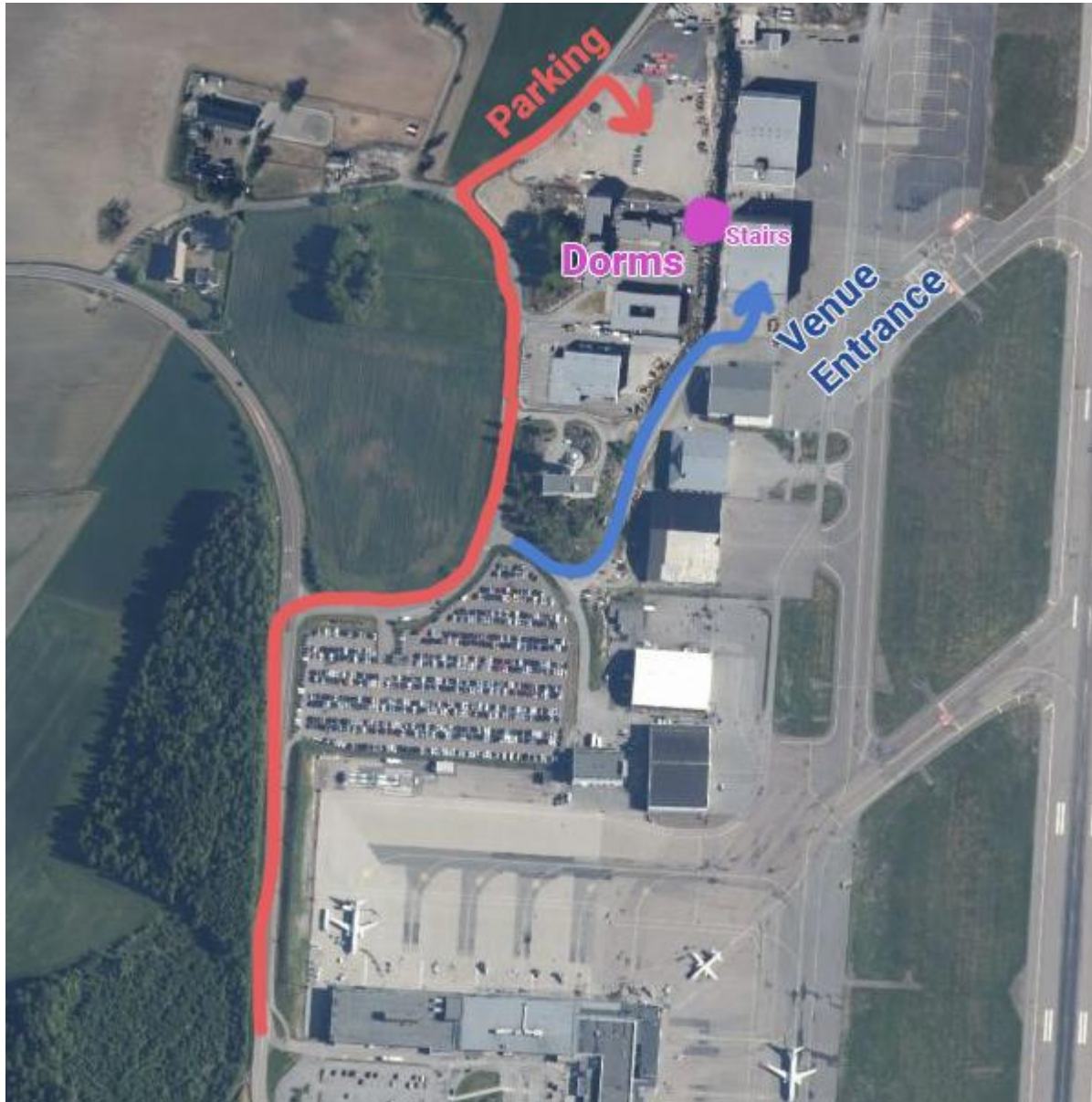
Pilot will be hosting various events on an ad-hoc basis. These will be announced in the Norway Live Discord channel.

Access to the venue

All participants will get a code that can be used to access the venue at all times.

P Map and parking

The parking is free at the designated area of the map on the gravel area. No parking permit is required. It's alright to park outside the venue to load/unload your equipment. We've also outlined the stairs you can use to access the sleeping accommodation.



H Hydration

There is a free coffee machine available for everyone. If you fancy more fancy coffee, there's a Starbucks coffee machine on the first floor for a charge. Warm water is also available.

We remind you that alcoholic beverages are prohibited to be consumed or brought into the venue.

Food

A snack machine with baguettes and similar are available at the venue. Otherwise there's multiple alternatives such as Fokserød (5 min drive) such as McDonalds, Obs and Shell

Seating

You'll be provided with one desk (125x85cm) and a chair.

- You can expect one power socket, if you need more to e.g. power your monitor, you need to take with you a grounded extension cord.
- You may not connect other appliances than your computer and accessories to the power grid, this is due to capacity.
- If you're going to connect to the internet with wire, take with you an ethernet cable that's at least 10 m long as the switch might be far away from you.



The picture is a bit distorted as it's taken with wide-lens, the measurements are correct. The seating arrangement might be different than pictured.